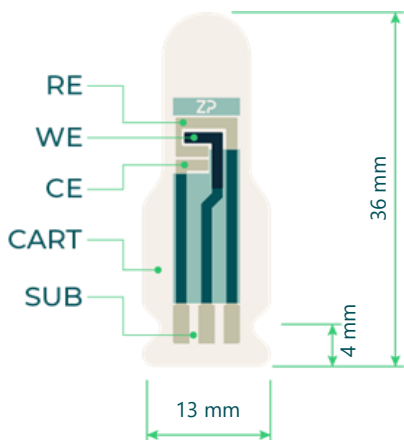


CHILLI SENSOR CARTRIDGE PACK



General description

Cartridge Name:	Chilli sensor Cartridge Pack
Sensor Name	Chilli sensor
Sensor Product Code:	ZPS CHI-000-00219
Revision number:	ZPS CHI-003-00219 v0.1

Production description

Chilli sensors suitable for disposable applications of measuring the capsaicin concentration of chilli samples dissolved in ZP ChilliPot buffer (ZPCH 100-000-00547).

Materials

REFERENCE ELECTRODE (RE)
Silver/Silver Chloride

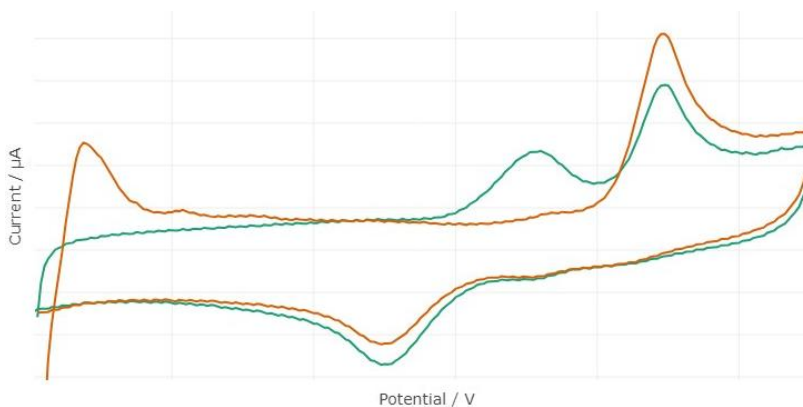
WORKING ELECTRODE (WE)
Carbon with analyte selective coating

COUNTER ELECTRODE (CE)
Silver/Silver Chloride

SUBSTRATE (SUB)
PET

CARTRIDGE (CART)
PLA

Performance



Dimensions

Length	36 mm ± 0.10 mm
Width	13 mm ± 0.10 mm
Thickness	1.5 mm ± 0.10 mm
Weight	0.46 g ± 0.1 g

Designed to be use with ZP FoodSense Generation 4 device, SenseitAll mobile application and our on-cloud data management system, Djuli. Expect around 8RSD% variability due to sensor and system factors, with additional variation from samples and preparation. Powder samples tested 14 days post-extraction showed up to 9.4RSD% deviation. Each sample's unique properties may impact precision



CHILLI SENSOR CARTRIDGE PACK

Components and hazards

Ingredients to be disclosed according to regulations:

Component (CAS nr.)	Hazards classification	Weight percent [%]
Silver (7440-22-4)	H400, H410	1-6 %
Silver Chloride (7783-90-6)	H400, H410	1-6 %

Take caution when handling these sensors, as there might be sharp parts and hazardous chemicals. Use personal protective equipment. Handle with gloves.

Storage

Recommended storage temperature 2-25°C, 20-50% RH. Keep dark, protect from exposure to UV-light. Keep sensor container tightly closed in a dry and well-ventilated place. Proper storage of sensors requires the sensing area to be facing upwards, free from any contact or interference. Recommended shelf life of 1 year.

Disclaimer

This product is for research and development applications only. This product is not suitable for drug, food or household applications. Product is not tested for biocompatibility and ZP takes no responsibility for in-vivo usage. It is intended to be used in aqueous systems. Please contact ZP for discussing your intended application.

Take caution when handling the sensors, as there might be sharp parts and chemical hazards. Use personal protective equipment.

Developer note

Zimmer & Peacock specializes in the development and customization of electrochemical sensors tailored to specific applications. In addition to our standard sensor offerings, we can design and manufacture customized sensors to detect a wide range of analytes beyond those listed in the respective datasheets.



CHILLI SENSOR CARTRIDGE PACK

We provide flexibility in sensor design, offering various electrode configurations, geometries, and materials to meet unique project requirements. Our sensors are available in multiple formats, including micro-well and microfluidic cavity designs, to support different experimental and industrial needs.

Furthermore, we can integrate customized assays into our **SenseltAll** ecosystem for seamless deployment or even develop bespoke potentiostats and electromechanical devices to complement your sensing platform.

For inquiries about customized sensors or to discuss your specific requirements, please reach out to us via the contact form on www.zimmerpeacock.com or email us at sales@zimmerpeacock.com. We look forward to collaborating with you to create tailored sensor solutions.